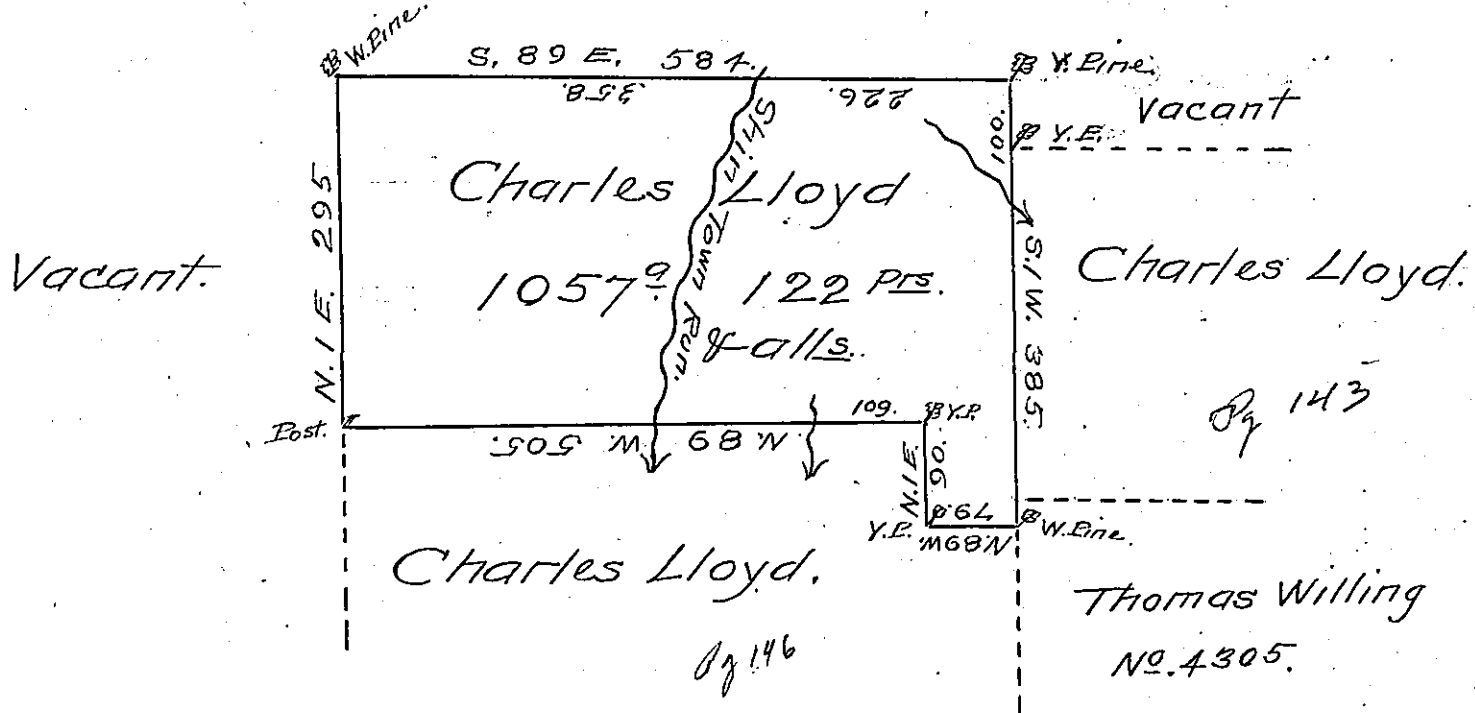


Vacant.



Situate in Chapman Township County of Clinton including Shin Town Run and bounded as above discribed, Surveyed to Charles Lloyd on the 17th day of November 1840 by virtue of his Warrant for 1000 acres bearing date the 29th day of October 1840 Containing one thousand & fifty seven acres one hundred and twenty two perches with allowance of six per Cent for Roads &c.

B. W. Morrison D.S.

To Jacob Sallade Esquire }
 Surveyor General }

IN TESTIMONY that the above is a copy of the original remaining on file in the Department of Internal Affairs of Pennsylvania, made conformably to an Act of Assembly approved the 16th day of February, 1833, I have hereunto set my Hand and caused the Seal of said Department to be affixed at Harrisburg, this Twenty eighth day of September 1905.

Isaac B. Brown
 Secretary of Internal Affairs.